

# BioView™ Manual

BioTrak™ 645S/745S Thermal Mass Flow Meters for Biogases

## Instruction Manual

Document: S-IM-BioView  
Rev A\_PN 106515



# BioView Software

## Disclaimer

---

### **GLOBAL SUPPORT LOCATIONS: WE ARE HERE TO HELP!**

For Global Service Centers, go to <http://www.sierrainstruments.com/facilities.html>

### **CORPORATE HEADQUARTERS**

5 Harris Court, Building L Monterey, CA 93940  
Phone (831) 373-0200 (800) 866-0200 Fax (831) 373-4402  
[info@sierrainstruments.com](mailto:info@sierrainstruments.com)  
[www.sierrainstruments.com](http://www.sierrainstruments.com)

### **EUROPE HEADQUARTERS**

Bijlmansweid 2 1934RE Egmond aan den Hoef  
The Netherlands  
Phone +31 72 5071400 Fax +31 72 5071401  
[sales@sierrainstruments.nl](mailto:sales@sierrainstruments.nl)

### **ASIA HEADQUARTERS**

Second Floor Building 5, Senpu Industrial Park  
25 Hangdu Road Hangtou Town  
Pu Dong New District, Shanghai, P.R. China  
Postal Code 201316  
Phone: + 8621 5879 8521 Fax: +8621 5879 8586

### **© COPYRIGHT SIERRA INSTRUMENTS 2022**

No part of this publication may be copied or distributed, transmitted, transcribed, stored in a retrieval system, or translated into any human or computer language, in any form or by any means, electronic, mechanical, manual, or otherwise, or disclosed to third parties without the express written permission of Sierra Instruments. The information contained in this manual is subject to change without notice.

### **TRADEMARKS**



BioTrak™, BioCal™, BioSelect™, FlowTrak™, BioView™, and DigiSense™ are trademarks of Sierra Instruments, Inc. Other product and company names listed in this manual are trademarks or trade names of their respective manufacturers.

---

## Warnings and Cautions

### General Safety Information

We use caution and warning statements throughout this book to draw your attention to important information.

Symbol Key		
Symbol	Symbol Meaning	Description
	Warning	This statement appears with information that is important to protect people and equipment from damage. Pay very close attention to all warnings that apply to your application.
	Caution/Note	This statement appears with information that is important for protecting your equipment's performance. Read and follow all cautions that apply to your application.



### CAUTION

- Caution! Before making adjustments to the Smart Electronics device, verify the flow meter is not actively monitoring or reporting to any master control system. Adjustments to the electronics will cause direct changes to flow control settings.
- Caution! All flow meter connections, isolation valves and fittings for hot tapping must have the same or higher pressure rating as the main pipeline.
- Caution! The flow meter electronics and sensor probe have been manufactured and calibrated to operate as a unit. The flow meter will not operate properly if parts are replaced from another meter.
- Caution! Printed circuit boards are sensitive to electrostatic discharge. To avoid damaging the board, follow these precautions to minimize the risk of damage:
  - before handling the assembly, discharge your body by touching a grounded, metal object
  - handle all cards by their edges unless otherwise required
  - when possible, use grounded electrostatic discharge wrist straps when handling sensitive components

### Notice

This publication must be read in its entirety before performing any operation. Failure to understand and follow these instructions could result in serious personal injury and/or damage to the equipment. Should this equipment require repair or adjustment beyond the procedures given herein, contact the factory at:

Sierra Instruments  
5 Harris Court, Building L  
Monterey, CA 93940  
North America: 1-831-373-0200  
[www.sierrainstruments.com](http://www.sierrainstruments.com)

Sierra Instruments believes that the information provided herein is accurate however be advised that the information contained herein is NOT a guarantee for satisfactory results. Specifically, this information is neither a warranty nor guarantee, expressed or implied, regarding performance; merchantability; fitness; or any other matter with respect to the products; nor recommendation for the use of the product/process information in conflict with any patent. Please note that Sierra Instruments reserves the right to change and/or improve the product design and specification without notice.

1. Introduction	Page 6
2. Installation	Page 7
3. Operation	Page 10
a. Main Screen	Page 10
b. Charts Settings	Page 12
c. Configure	Page 14
d. Data Logger	Page 20
e. Simulation Mode	Page 21
f. BioSelect® Gas Menu	Page 23
g. BioCal™ Test	Page 25
h. BioCal™ Certificate	Page 26
4. Glossary of Terms and Abbreviations	Page 28
5. Index	Page 29

# BioView Software

## Introduction

---

### **Introduction**

Thank you for purchasing the BioTrak 645S/745S Thermal Gas Mass Flow Meter from Sierra Instruments. The BioTrak is one of the most technically advanced flow meters in the world. Extensive engineering effort has been invested to deliver advanced features, accuracy measurement performance, and outstanding reliability.

The new BioTrak™ software allows users to easily display data and configure the BioTrak to their specific application parameters. Then, log flow/temperature data to an Excel® file. The software can also access the BioSelect® menu and the BioCal™ calibration validation diagnostic test.

The BioTrak is available with two different options: the RS485 Communication option or the Pulse Output option. The BioTrak™ software has been developed to react intuitively to the type of BioTrak meter with which it is interfacing.

This manual contains the installation and operation instructions for the BioView™ software.

This manual is divided into the following sections: Introduction, Installation, Operation, Glossary, and Index.

### Installation

Open the enclosure by unscrewing the enclosure cap, loosen the two captive screws on the display assembly and rotate it open. Connect the 645S/745S to a PC with a USB (type A, mini cable). If the PC is connected to the internet and running Windows®, the PC will try to automatically load the VCP driver. If the driver does not load automatically, download the VCP driver at: [www.ftdichip.com/Drivers/VCP.htm](http://www.ftdichip.com/Drivers/VCP.htm)



**NOTE!** The latest version of the BioTrak™ software is available for download at <https://www.sierrainstruments.com/products/bioview.html>

Fig. 2.1: Online Download Location for BioTrak™ software

1 - Click on the BioView™ software download button

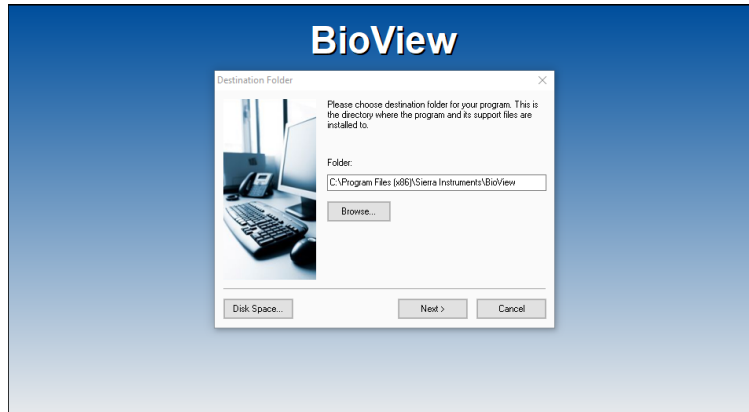
The screenshot shows the Sierra Instruments website page for BioView Software. At the top, there is a navigation bar with links for Products, Support & Contact, Resources, Docs & Downloads, Request Quote, and My Account. A 'Get A Quote' button is also visible. The main content area features a large heading 'Configuration and Data Logging Software BioView Software' followed by a list of features: quick access to configuration parameters, selection of measurement units, Bi>Select™ menu, BioCal™ Calibration Validation, alarm settings, and data logging to Excel. A prominent red button labeled 'BioView Software Download' is highlighted with a line from the instruction text. Below the main content, there is an 'Overview' section and a 'Need Assistance?' section with contact information.

# BioView Software

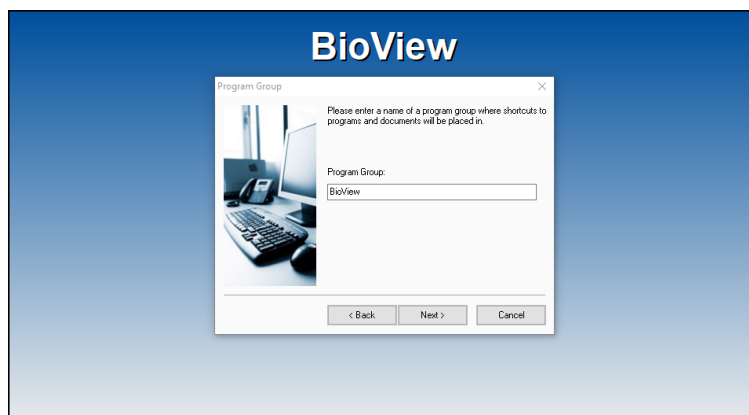
## Installation

---

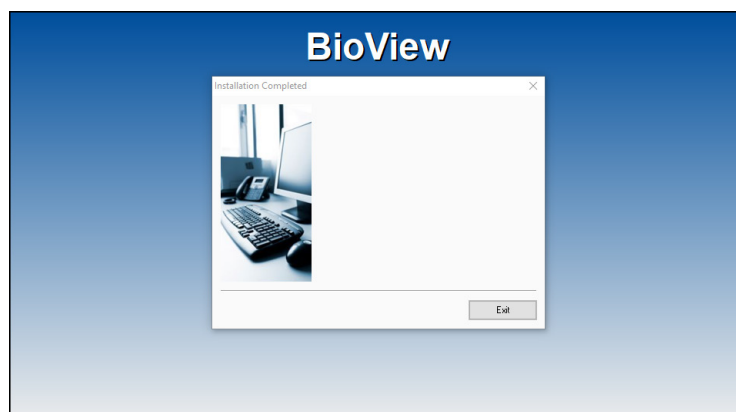
To install the BioView program, run the "BioView\_V#.#-setup.exe" file that is located in the downloaded file. After clicking "Next" the screen will show:



Select the folder in which you wish to install BioView, then click "Install".



When the program is done installing, you may exit, then restart your computer.





## COM Port Assignment

Be sure to have your BioTrak connected by USB to a PC or laptop before opening BioView™ Software. Upon opening BioView™ Software for the first time, Windows® will assign a "virtual COM port". The COM port number that has been assigned will appear automatically in the drop down box.

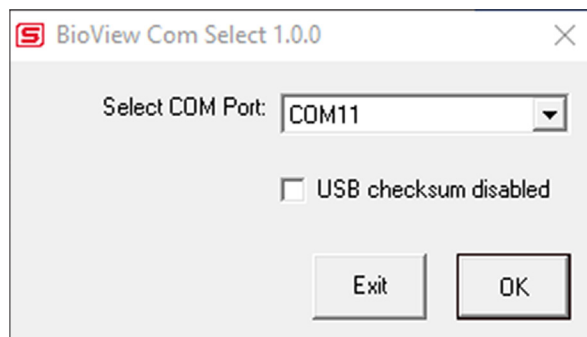
If the correct COM Port does not appear, go to Control Panel/Device Manager and click on Ports (COM & LPT). The COM port number should be displayed under the USB symbol.



If prompted, enter the assigned COM port in BioView™ by using the drop down menu and press **OK**.

**NOTE!** The 645S/745S meter must be plugged into the computer in order for the system to register it.

Fig. 2.2: COM Port Selection Window



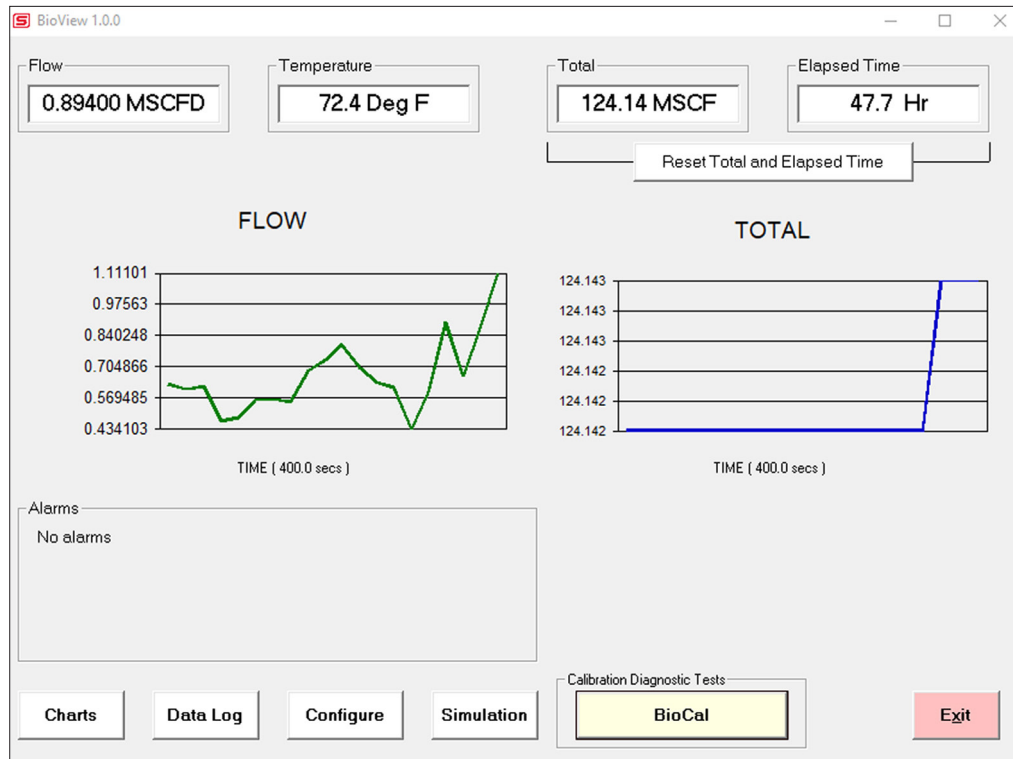
# BioView Software

## Operations

### Main Screen

The image below depicts the main screen that appears upon entering BioView™ Software.

Fig. 3.1: BioView™ Main Screen



### Charts Button

This calls up two charts that can be configured for either temperature or flow. Each chart can be individually enlarged and re-scaled from the original default settings. For more information on how to change the charts settings, refer to p. 12.

**NOTE!** The charts are refreshed at user selected update rate. See p. 12 for more information on setting up charts.

### **Data Log**

This function allows all selected data to be logged to an Excel® file at the specified sample time. All readings are time/date stamped. For more information on using the Data Logger function, refer to "Data Logger" on page 20.

### **Configure**

This allows the operator to go in and set the application parameters. This can be done either via the BioView™ software or manually via the instrument's display. For more information on configuring application parameters, refer to p. 14.

### **Simulation**

This function can be used to verify that all the flow meter outputs are working properly. The easiest way to perform this check is to enter a specific temperature/flow rate. The corresponding analog outputs can be verified using a DMM and using a watch for the pulse. Refer to p. 21 for more information on how to use the Simulation function.

### **BioCal™**

Sierra Instruments has developed the BioCal® Calibration Validation to help our customers avoid sending the meter back for annual or biennial re-calibrations. Calibration Validation allows our customers to validate the accuracy and functionality of the meter in the field with the push of a button. By performing a simple test, the operator can verify that the meter is running accurately. BioCal® ensures the repeatability, functionality of the sensor and its associated signal processing circuitry, and cleanliness of the sensor.

The BioCal™ calibration validation test can be performed while the unit is still in the pipe. The BioCal™ calibration validation test is explained in greater detail on p. 25.

### **Alarms**

The unit can be configured for high/low alarms for either flow or temperature. The "alarms window" displays any alarms or warnings.

### **Exit**

Exit the application.

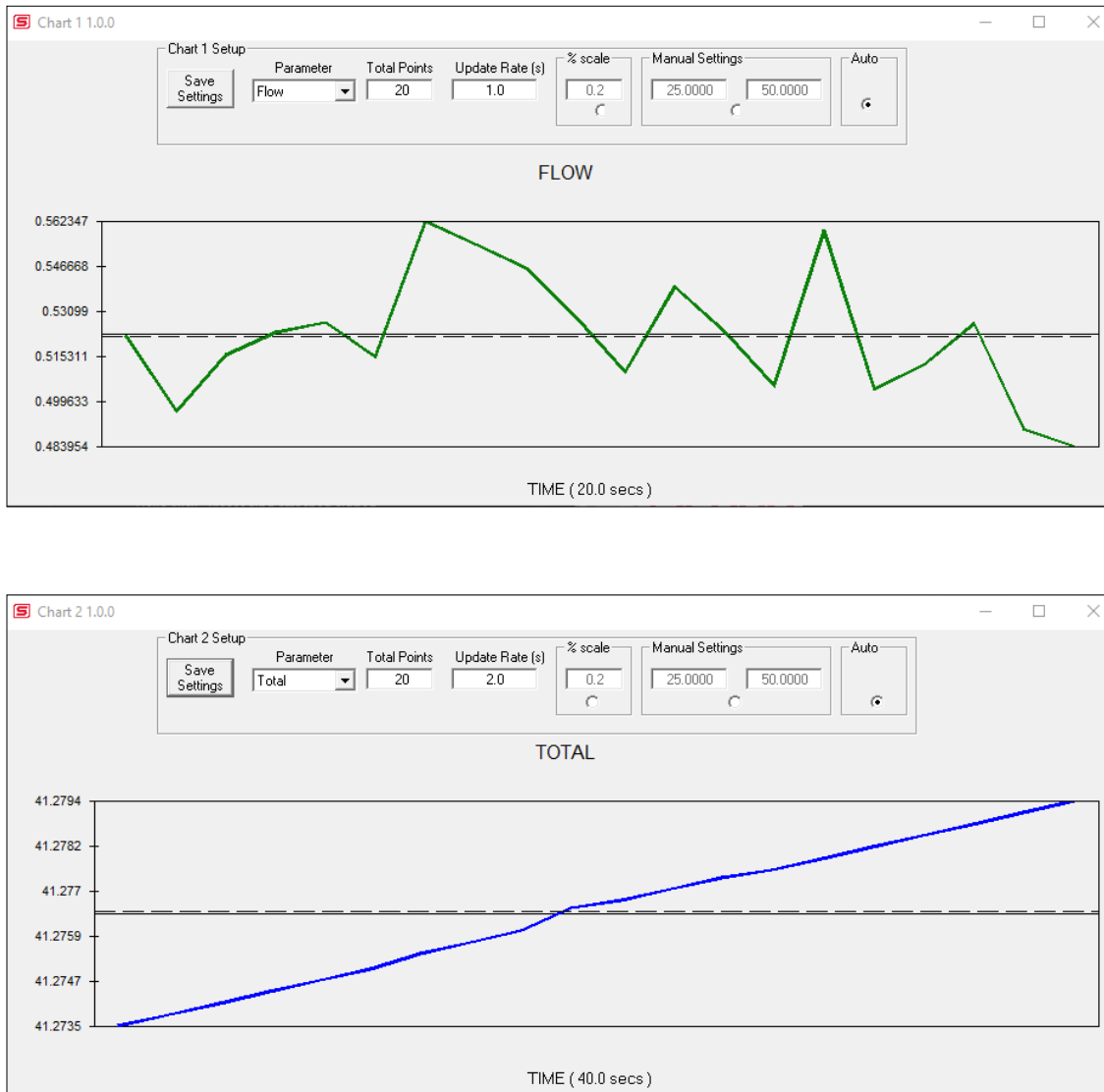
# BioView Software

## Operations

### Charts Settings

From the main menu screen, click on "Charts". Two charts will appear side-by-side. Each chart can be selected for flow, temperature or total flow and scaled in one of three ways: a plus/minus percent scale, inputting min/max values manually, or real-time automatic scaling.

Fig. 3.2: Chart Settings Window - Charts 1 and 2



## **Save Setting**

Click the Save Settings button to save the chart settings to the main page window. These settings can then be closed by clicking on the "X" at the top right corner of the window.

## **Parameters**

Flow, temperature or total flow can easily be selected for charting.

## **Total Points**

The total points specifies the number of points plotted on the graph. Older data is automatically omitted.

## **Update Rate**

The update rate controls the data refresh rate.

## **Percent (%) Scale**

This sets the scale to a plus/minus specified percentage from the initial measured value. Typically, the minimum/maximum is scaled at plus/minus 10% of that initial value.

## **Manual Chart Setting**

The Manual mode allows a user to input min/max values for chart scaling. When entering new values, click on Save Settings for them to take effect.

## **Automatic Chart Setting**

Automatic mode lets the program adjust the scaling on a real-time basis based on the entire range of values.

# BioView Software

## Operations

### Configure

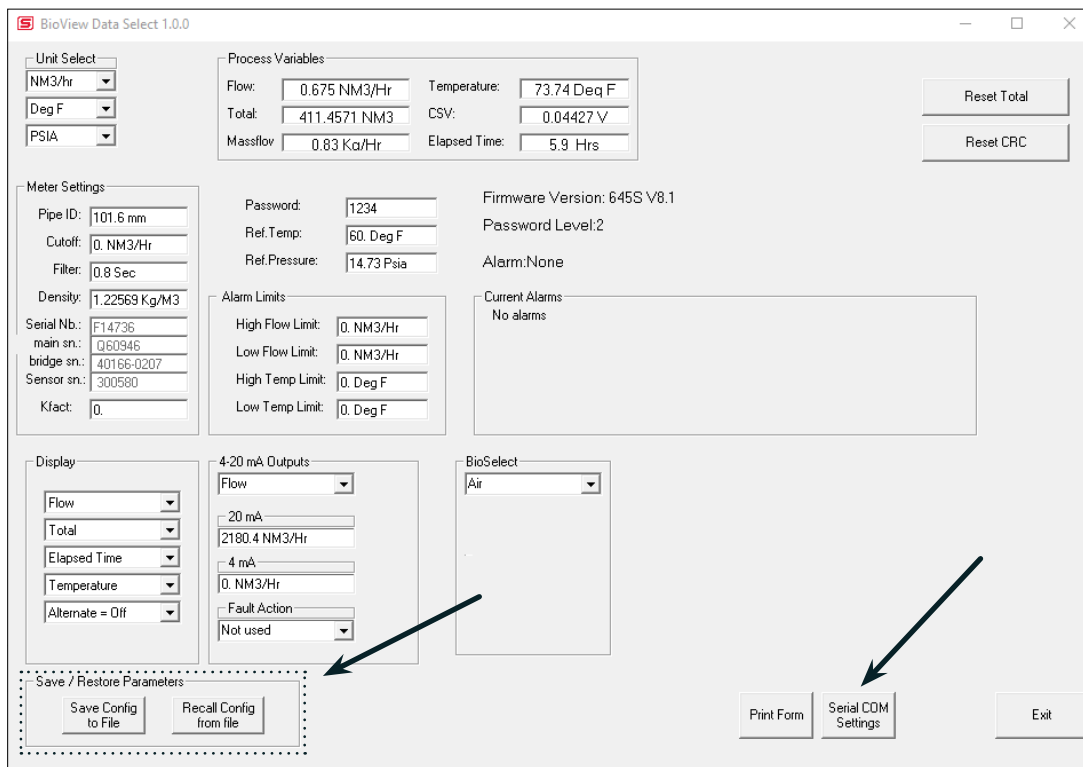
From the main menu, click on the "Configure" button and enter the requested password for either Level I (1234) or Level II (9111) access.

Fig. 3.3: Password Window



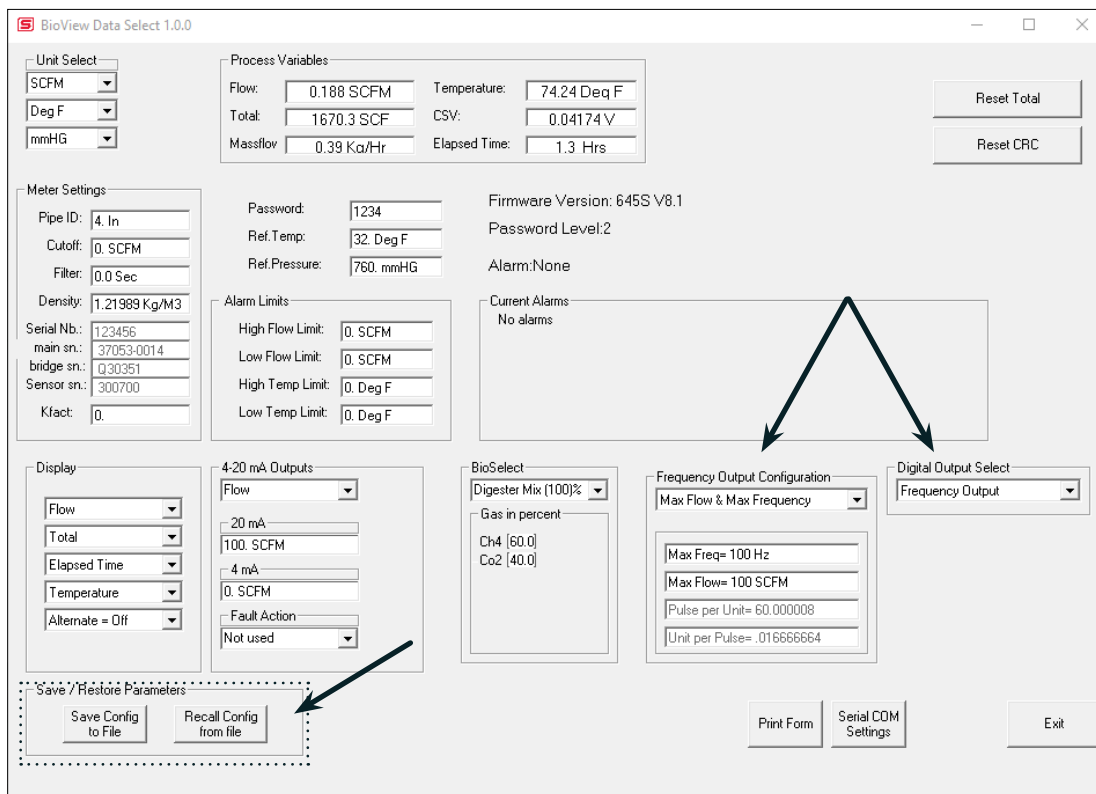
**NOTE!** Most users will only need access to the Level I screen to do basic setting of units, alarms and output scaling.

Fig. 3.4: Level II Configuration Screen - RS485 Option



**NOTE!** The "Save/Restore Parameter" options in both Figures 3.4 and 3.5 are not available using a Level 1 password.

Fig. 3.5: Level II Configuration Screen - Pulse Output Option



The BioView™ software is an intuitive program that recognizes the meter configuration automatically. The meter configuration determines whether the screen in Fig 3.4 or 3.5 will appear.

The RS485 settings can be accessed by clicking on the "Serial COM Settings" button highlighted by the arrow in Figure 3.4.

The Pulse Output settings can be accessed in the "Frequency Output Configuration" and "Digital Output Select" fields highlighted by the two arrows in Fig. 3.5.

# BioView Software

## Operations

---

### Unit Select

The "Unit Select" section is used to change the desired units in the flow rate, temperature and reference pressure parameters.

### Process Properties

**Pipe Inner Diameter (ID):** The pipe inner diameter can be entered in either inches or millimeters, depending on whether the flow or mass measurement units selected are metric or US standard. Once entered, the program will automatically recalculate the pipe cross-sectional area for the velocity/flow calculations. A precise ID is required to ensure accurate flow measurement.

**Cut-off:** A gas flow rate at (or below) the cut-off setting will cause the meter to read zero. Default cut-off is set to 1% of maximum flow value.

**Filter:** Changing this value will increase or decrease the damping of the flow rate reading. Increase the setting to increase damping. The default setting is 0.8 seconds (see 645S/745S Instruction Manual for more details).

**Serial Numbers:** Serial numbers of the meter, the main board, bridge and sensor (factory set).

### Display

The four drop-down boxes can be used to select the data to present on Screen 1 and Screen 2 of the flow meter display. By selecting "Alternate", the screen automatically switches between the data screens.

### Alarm Limits

Users can set both high/low alarms for both flow and temperature. When a limit is reached, an alarm message is displayed. In addition, if the meter's digital output is activated, breaching the alarm limit automatically activates a discrete output to control an external buzzer, light or some other way to alert the operator.

### Analog 4-20mA

The BioTrak has one analog 4-20mA output that is configurable for either flow or temperature. Though the BioTrak will be scaled for the specific application coming from the factory, BioView™ allows the operator to easily re-scale the 4-20mA output as needed.



**Process Variables**

**Flow:** Current flow rate in selected units

**Total:** Cumulative mass or volume flow in selected units

**Velocity:** Massflow

**Temperature:** Gas temperature (Fahrenheit or Celsius)

**CSV:** Current sense voltage

**Elapsed Time:** Time since the Totalizer was reset

**Reference Conditions**

Reference temperature and pressure are the standard (or normal) temperature and pressure (STP) for which the flow rate is calculated.

**BioSelect®**

This menu allows the user to choose from a list of gases. More information on BioSelect® can be found on p. 23.

**Digital Output Select**

This selection configures the 645S/745S digital output for either pulses (counts) or as an alarm discrete output.

If the pulses (counts) output is selected, it can be programmed in three different ways using the pull-down menu "Frequency Output Configuration".

- Maximum flow and maximum frequency
- Pulses per Unit
- Units per Pulse



**NOTE!** This is only available on a meter configured for Pulse Output. If RS485 option has been ordered, the Pulse option is not available.

# BioView Software

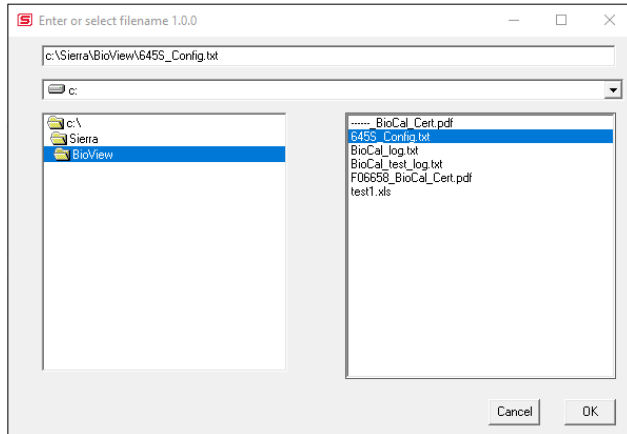
## Operations

---

### Save Current Configuration to File

The current configuration parameters are saved to a text file.

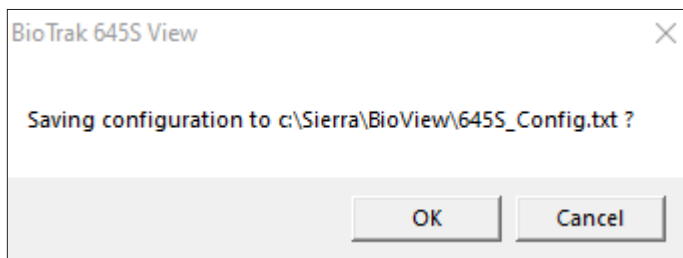
Fig. 3.6: Save Current Configuration to File Window



Select an existing file to overwrite or a new file name and then press **OK**. A confirmation window will be shown.

**NOTE:** This feature is only accessed with a Level II password.

Fig. 3.7: Confirmation of Saved Configuration Window



### Recall Configuration to File

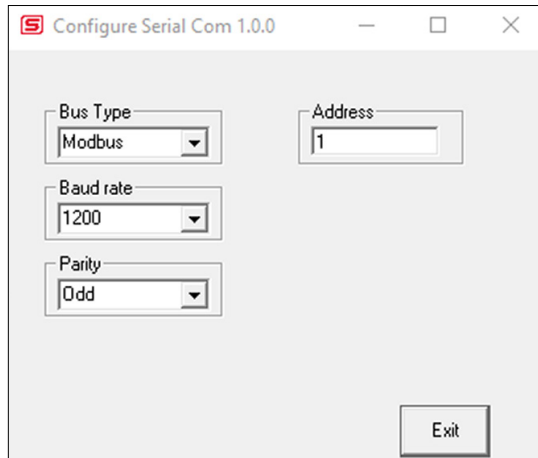
This allows the operator to recall an existing BioTrak configuration file.

**NOTE:** This feature is only accessed with a Level II password.

## Serial COM Settings

Use this function to set the serial communication settings for any of the optional BioTrak bus communication boards.

Fig. 3.8: Select Serial Communication Window



**NOTE:** This is only available on a meter configured for RS485 Modbus RTU or BACnet MS/TP. If the Pulse Output option has been ordered, the RS485 Modbus RTU or BACnet MS/TP option is not available.

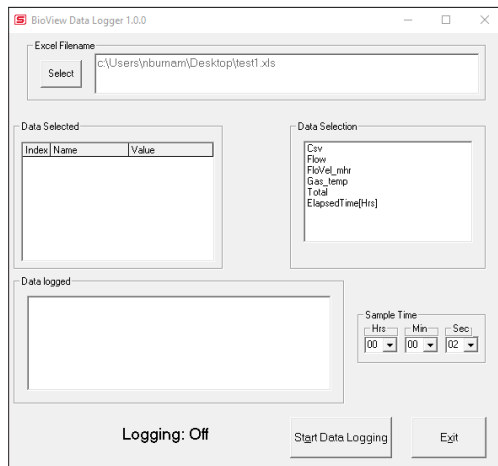
# BioView Software

## Operations

### Data Logger

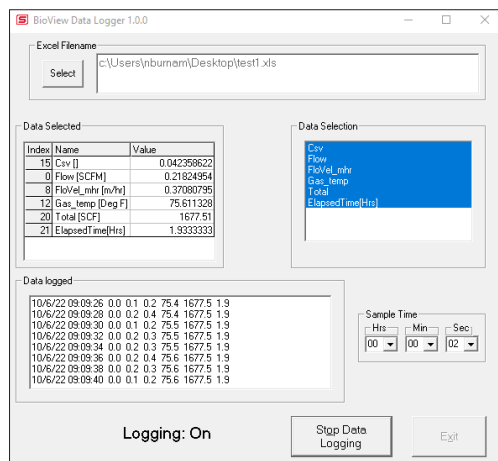
The Data Logger screen can be accessed from the main screen. Clicking the "Data Logger" function will prompt the user for a password. Enter a Level I or Level II password and the Data Logger window will appear.

Fig. 3.11: Data Logger Window - Logging Turned Off



Select the sample time from the drop down menu, and then select the required data from the Data Selection list. Select or create a name for the Excel® file and then press the "Start Data Logging" button.

Fig. 3.12: Data Logger Window - Logging Turned On

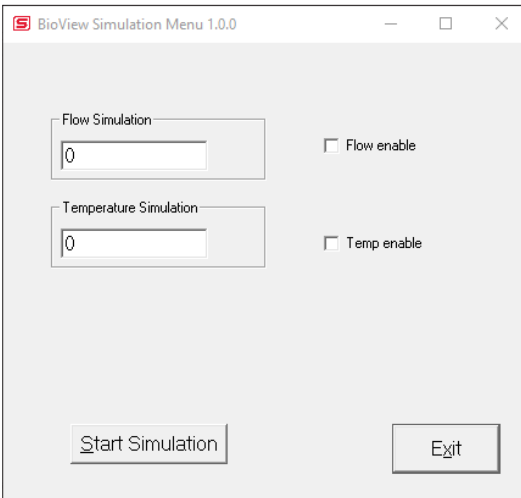


When "Start Data Logging" is pressed, the data is recorded in the specified Excel® file - and also displayed in the Data Logged window. Pressing "Stop Data Logging" ends data acquisition.

## Simulation Mode

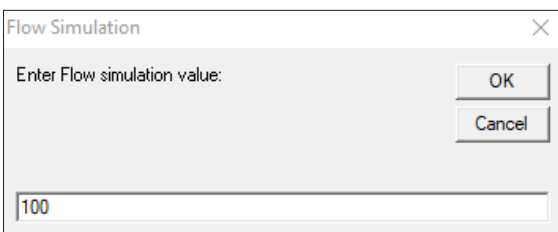
After clicking on "Simulation", a password will be requested. Enter the password and then the Simulation screen will be shown.

Fig. 3.13: Simulation Mode Window



The simulation mode simulates flow rate or temperature. Click on the required data and enter a value. Simulation mode allows users to verify the operation of the analog output, digital outputs and totalizer at simulated flow rates and temperature.

Fig. 3.14: Entering a Simulation Value

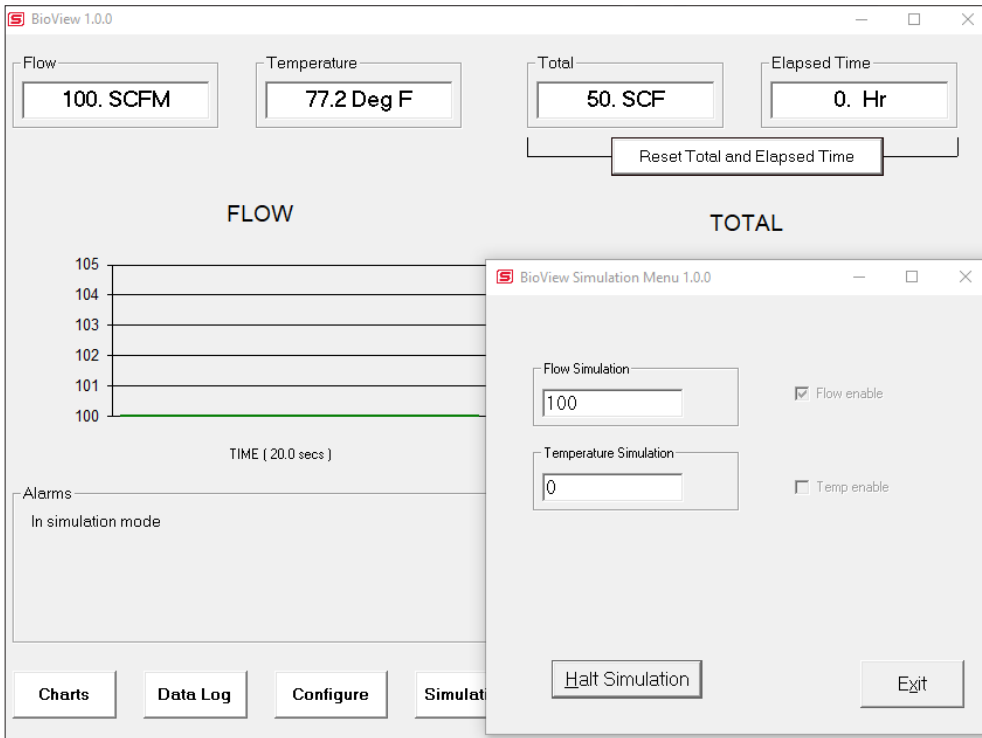


Enter the value, click **OK**, select the corresponding checkbox, and press "Start Simulation".

# BioView Software

## Operations

Fig. 3.15: Simulation Running



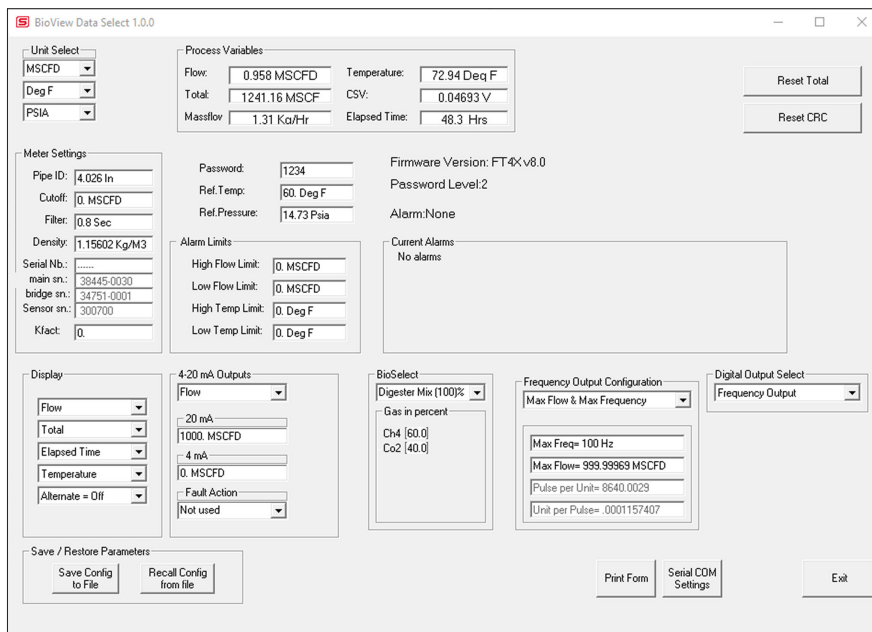
In Simulation mode, all BioTrak outputs and the Totalizer respond as if in normal measurement mode. Click "Halt Simulation" to end.

### BioSelect® Gas Menu

Each BioTrak flow meter is calibrated in the factory and pre-programmed with a list of available pure gases or digester gas mix calibrations. To choose what gas or digester gas mixture flow for the BioTrak to monitor, chose from the list of gases under BioSelect:

- Air
- Methane
- Digester Mix

Fig. 3.16: BioSelect® Menu



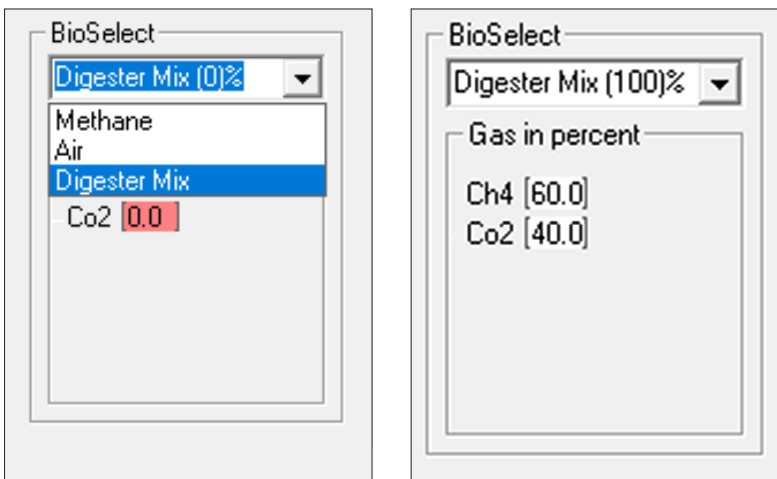
**NOTE:** A list of pure and mixed gases available on the BioTrak flowmeter are kept on the Sierra website at [www.sierrainstruments.com](http://www.sierrainstruments.com).

# BioView Software

## Operations

---

Fig. 3.17: Setting the BioSelect® Digester Mix



When the "Digester Mix" option is chosen, a series of additional gas concentration fields will appear. These fields are labeled "CH4%", "CO2%", etc. A default amount will appear in each field, these can be changed to any percentage between 1 and 100. The total for the gases in the Digester Mix must equal 100% or an error will occur.



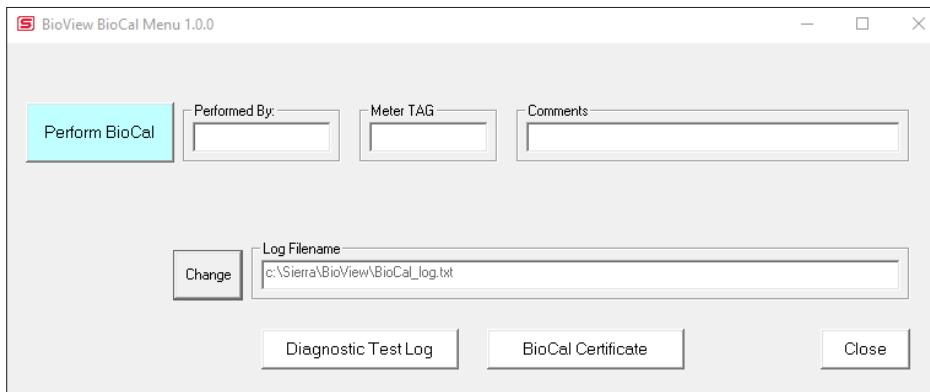
**NOTE:** If the total of both gases is greater or less than 100%, an alarm will show. Adjust the percentages until 100% is achieved.



## BioCal™

BioCal™ is performed to verify the proper operation of the BioTrak flow meter. From the Main menu, click on the "BioCal" button to access the BioCal™ Menu Window.

Fig. 3.18: BioCal™ Test Menu Window



On the BioCal™ Menu, there are fields to enter information about the person performing the test, meter tag information, and any other important information may be entered into the comments area.

A drop-down menu allows the user to choose between these two options:

- Flow goes to Zero during BioCal™
- Flow holds the last value during BioCal™

Please note that the test will take about four minutes. If the "go to zero" option is chosen, the flow measurement will stop and go to zero for this period. If the "hold value" option has been chosen, the totalizer will continue to increment..

The user can also specify a particular folder name and location for the data to be stored in a log to access test results at later times.

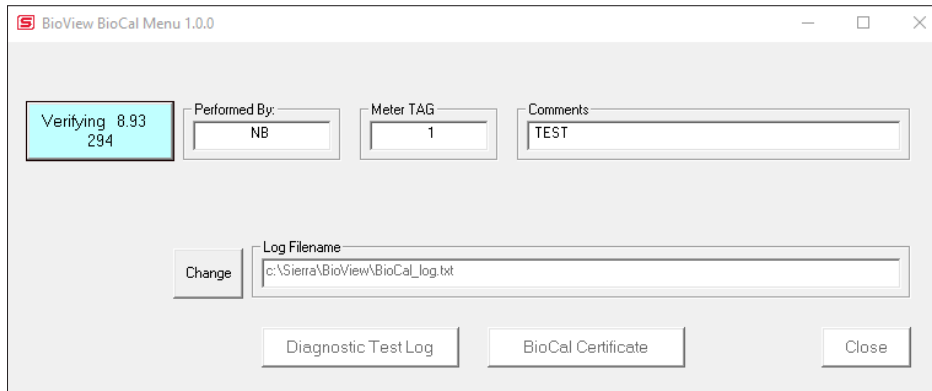
When ready to start, click the "BioCal Verify" button.

# BioView Software

## Operations

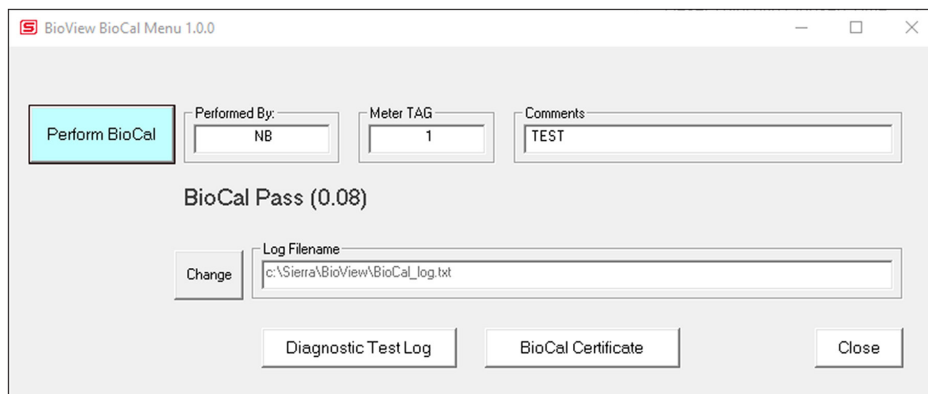
---

Fig. 3.19: Running a BioCal™ Test



A Pass/Fail message for the BioCal™ test will be displayed at the test conclusion.


Fig. 3.20: BioCal™ Results Window



### BioCal™ Certificate

The BioCal™ Certificate function displays the latest certification. When performing a BioCal™ test, all the data is logged into a log file with all pertinent data, including the serial number. A laptop or PC can be used to perform the BioCal™ test on the 645S/745S meter. When a BioCal™ certificate is requested, the program will search the log file for the specific serial number and will display only the last check performed.

Fig. 3.21: BioCal™ Certificate



**SIERRA**

5 Harris Court, Building L  
 Monterey, CA 93940 USA  
 Phone: 1-831-373-0200  
 Fax: 831-373-4402  
 sales@sierrainstruments.com

**BioCal™ CERTIFICATE**

CALIBRATION VALIDATION

**BioCal™ Performed on:** June 10 2022      9:54:55 AM

**Firmware version:** FT4X v8.0

**Sierra Meter Serial Number:** -----

**BioCal™ Results:** BioCal PASS

**BioCal™ Value:** 0.07

**Test Temperature:** 71.9 F

**Tag #/Meter Location:** 1

**Test performed by:** NB

**Additional Comments:** TEST

**BioCal™ is a calibration routine that validates the flow meter's calibration accuracy by testing the following:**

- \* Sensor free of residue or film
- \* Thermal Conductivity (heat transfer) repeatability of the sensor

### BioCal™ Log

The "View Log" button allows the operator to view a log of previous BioCal™ tests that have been executed on the meter.

Fig. 3.22: BioCal™ Log

Ser.Nb	Date	Time	Verify	PASS/FAIL	Temp	Perform by:	TAG	Comments
-----	June 10 2022	09:54:55	0.07	BioCal PASS	71.9 F	NB	1	TEST

Exit

# BioView Software

## Definitions

---

COM	Communication
CSV	Current Sense Voltage
DMM	Digital Multimeter
ID	Inner Diameter
mA	Milliamps
PC	Personal Computer
RTD	Resistance Temperature Detector
STP	Standard Temperature and Pressure
TSI	Temperature Sense Current

**Index**

- Alarm Limits, p. 16
- Analog 4-20 mA output (Pulse Output enabled models only), p. 16
- Configure, p. 14
  - Address (RS485 enabled models only), p. 19
  - Analog 4-20 mA Output, p. 16
  - Alarm Limits, p. 16
  - Baud rate (RS485 enabled models only), p. 19
  - Digital Output (Pulse Output enabled models only), p. 17
  - Filter value, p. 16
  - Flow cutoff, p. 16
  - Frequency Output (Pulse Output enabled models only), p. 17
  - BioSelect®, p. 23
  - Parity (RS485 enabled models only), p. 19
  - Password, p. 14
  - Pipe Area, p. 16
  - Reset Total, p. 14
  - Reset CRC, p. 14
  - Serial Communication (RS485 enabled models only), p. 19
  - Unit settings, p. 17
- Dampening factor, p. 16
- Filter value, p. 16
- Frequency Output (Pulse Output enabled models only), p. 17
- BioSelect®, p. 23
- Glossary, p. 28
- Installation, p. 7
- Introduction, p. 6
- Password
  - Level 1, p. 14
  - Level 2, p. 14
- Reset Total and Elapsed Time, p. 17
- RS485 Settings (RS485 enabled models only), p. 19
- Simulation Mode, p. 11
- USB, p. 9
- BioCal™, p. 25

 **NOTE!** is used for Notes and Information



Sierra Instruments  
5 Harris Court, Building L  
Monterey, CA 93940  
North America: 1-831-373-0200  
[www.sierrainstruments.com](http://www.sierrainstruments.com)

We Understand Flow is Tough.  
We can solve this together.