

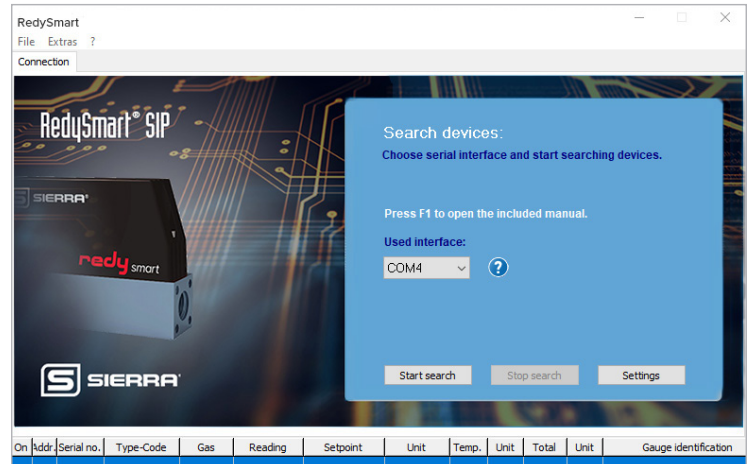
RedySmart® Series

This document describes the installation process for the RedySmart PDM-U cable driver. The driver can be used for the following operating systems.

- Windows XP™
- Windows Vista™
- Windows 7™

The driver is developed by FTDI and certified by Microsoft WHQL. For further information visit the FTDI website. You can download the driver from our website at sierrainstruments.com/redy-driver

For complete instructions, please download and read the [RedySmart Series Instruction Manual](#).



Installation

To install the drivers for an FTDI device follow the two steps below.

Note Please connect the PDM-U cable with your PC after you successfully installed the drive.

STEP 1. Install Driver

1. Download the driver from our website at sierrainstruments.com/redy-driver.
2. Double click on CDM20814_Setup.exe file and the installation routine for the USB serial-converter will start automatically. If a device of the same type has been installed on your machine before and the drivers that are about to be installed are different from those, the original drivers may need to be uninstalled first.

Note If you use Windows 7 and connect the PDM-U cable to a COM port, Windows 7 automatically starts to download the driver from the internet. If you prefer to proceed in this way, then continue with Step 2. Make sure internet connection is available.

3. After double clicking the setup, the dialog in Figure 1 appears, which describes the installation process. If this process finishes without an error, the driver is installed on your PC. On very fast computers the installation process is hardly recognizable.

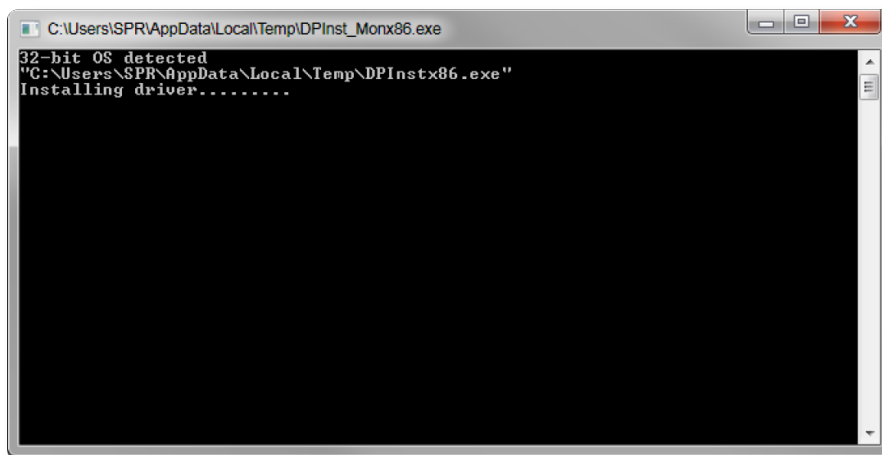


Figure 1: CDM20814_Setup.exe (USB Serial Convert driver) installs the driver

STEP 2. Get communication with the RedySmart device via RedySmart Smart Interface Portal (SIP) software

1. If the driver is successfully installed, you can connect a RedySmart device with the PDM-U cable to a COM port. Then start the get RedySmart SIP software.

Note Keep in mind that for each physical USB port a logical COM port is assigned. This means if you connect the PDM-U cable to another port as before, a new port will be initialised.

The COM port has to be properly chosen in the RedySmart SIP in order that the communication with the device can be built up.

2. To chose the proper COM port you have to use the combo box in Figure 2 (1. COM port). If you click on the blue question mark in RedySmart SIP, the Windows device manager opens and you can see the COM port to which the PDM-U cable is connected to.
3. Click on the button [Start search] to find the connected RedySmart devices. If connected devices show up with serial number in the lower part of the window, the driver has been installed properly and the correct COM port has been assigned.

You may find the connection process explained in more detail in the RedySmart SIP manual.

Note For some operating systems, it might be necessary to restart your computer in order to get the driver operating with RedySmart SIP.

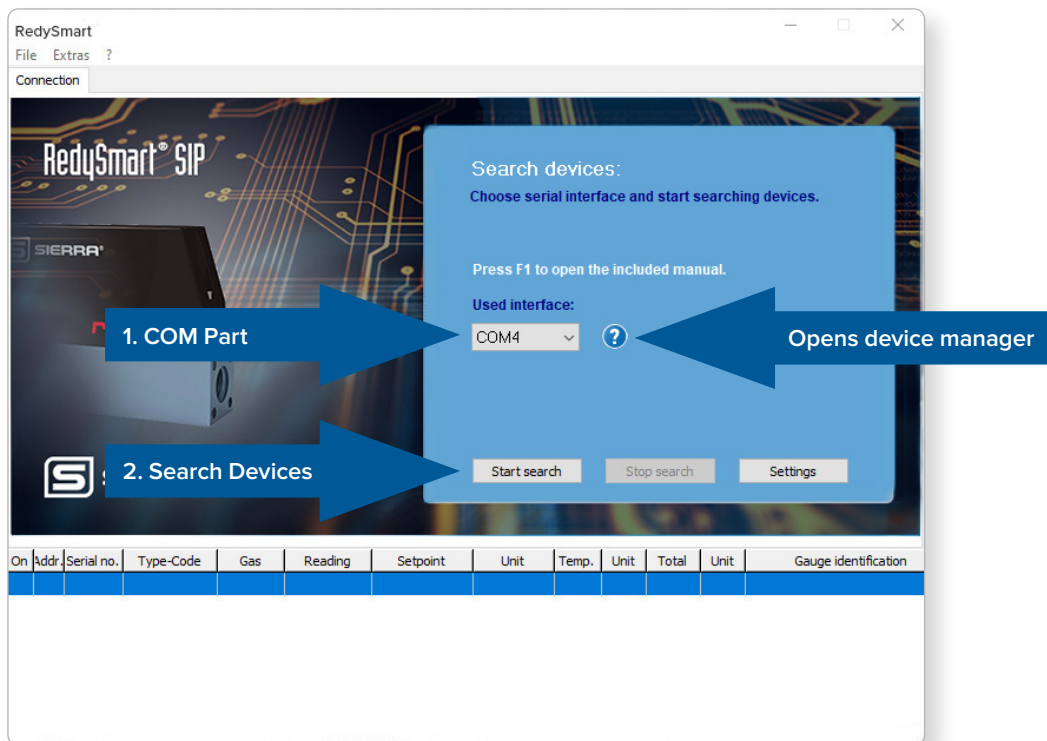


Figure 2: Configure the COM parts

**Windows XP, Windows Vista and Windows 7 are registered trademarks or trademarks of the Microsoft Corporation in the USA and/or other countries.*